



**Wichtig! Bitte mit der Pflegeanleitung aufbewahren!**

**Important! Please keep together with care instructions!**

**Let op! Bewaren samen met de onderhoudsinstructies!**

**Important! Conserver ensemble avec les conseils d'entretien!**

**Importante! Conservare con le istruzioni per la manutenzione!**

**Ważne! Proszę się dokładnie trzymać instrukcji!**

# Cosiflor DF 20

**Bitte nur beiliegende Schrauben verwenden.**

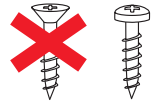
**Please use enclosed screws only.**

**Gelieve enkel bijgevoegde schroeven te gebruiken.**

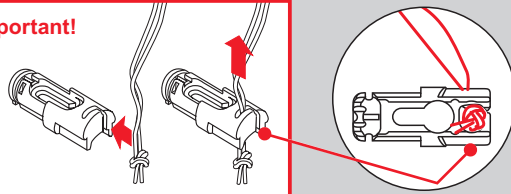
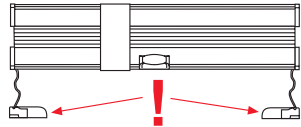
**Se servir exclusivement des vis jointes.**

**Si prega di utilizzare solo le viti allegate.**

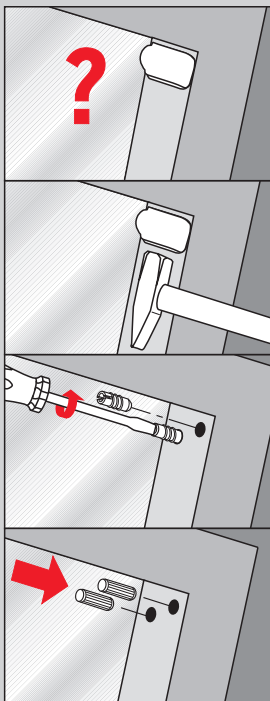
**Proszę użyć tylko dołączonych śrubek.**



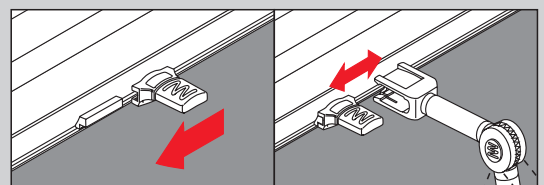
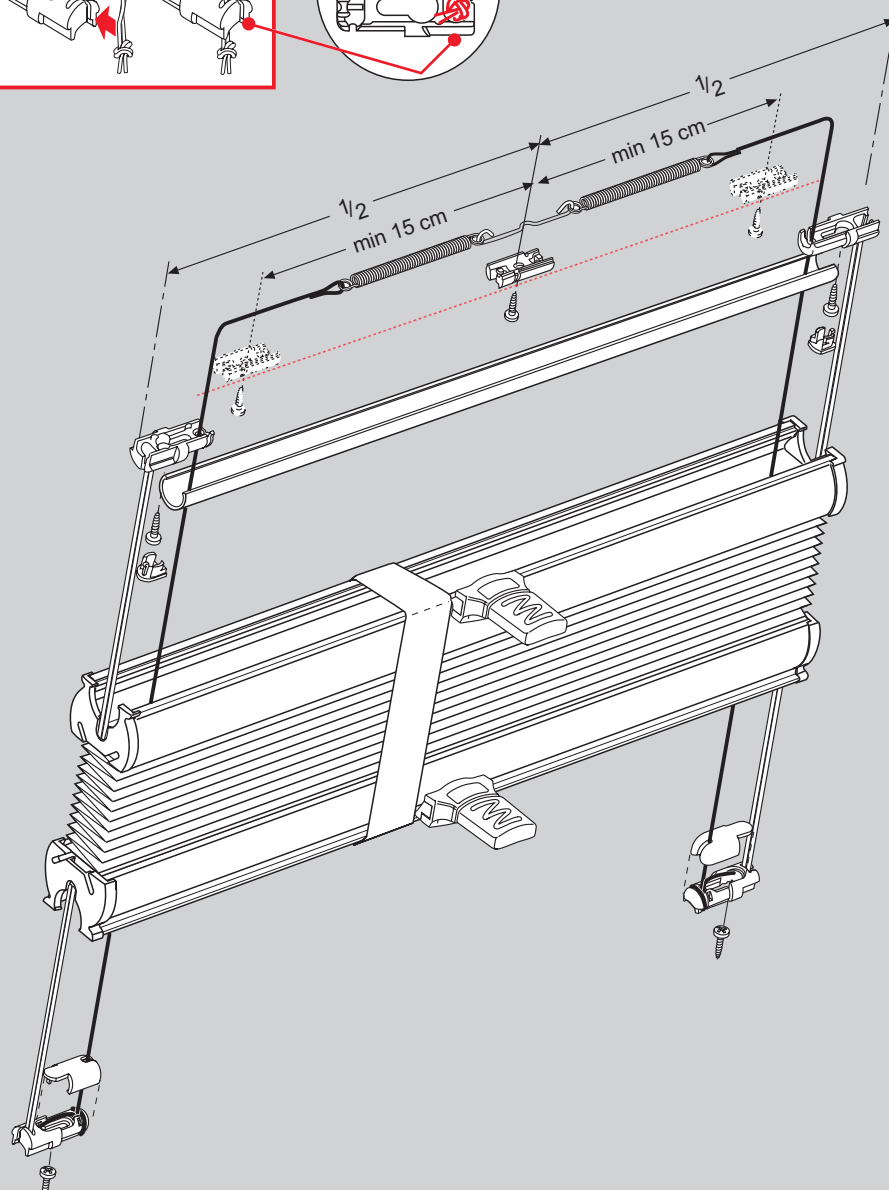
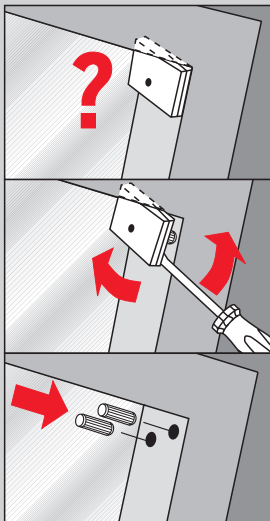
**Wichtig! • Important! • Let op! • Important!  
Importante! • Montaż**



**VELUX**  
Vorbereitung • Preparation  
Vorbereiding • Préparation  
Preparazione • Przygotowanie



**VELUX**  
Vorbereitung • Preparation  
Vorbereiding • Préparation  
Preparazione • Przygotowanie



**Montage der Anlage bündig mit der Fenstervorderkante.**

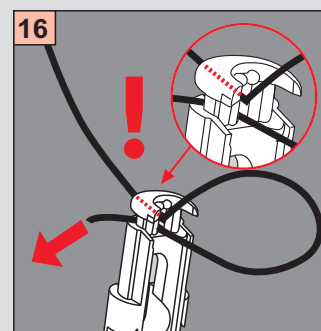
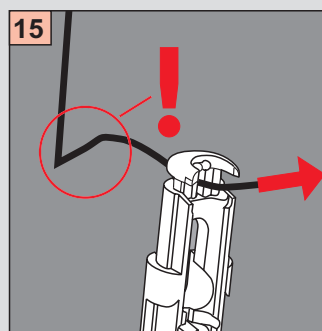
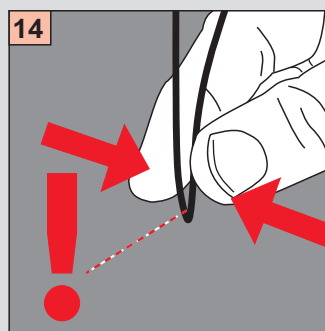
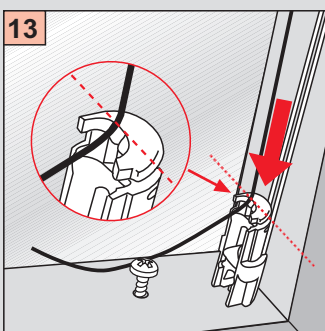
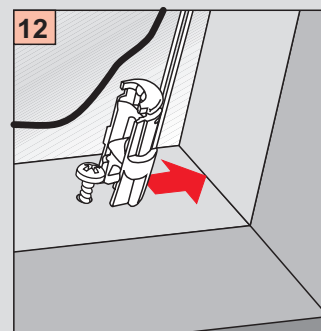
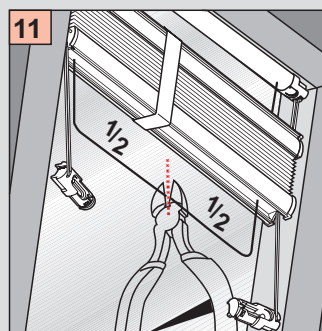
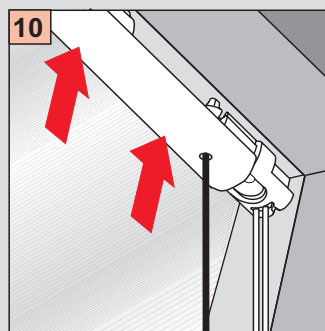
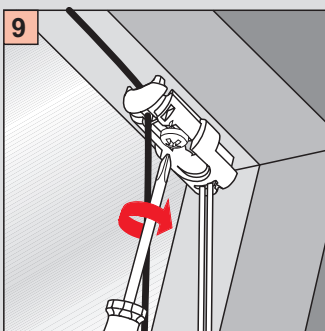
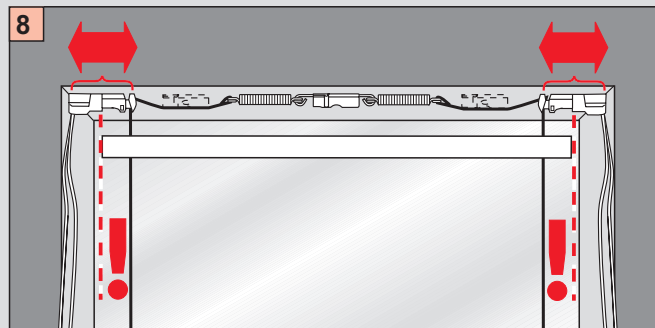
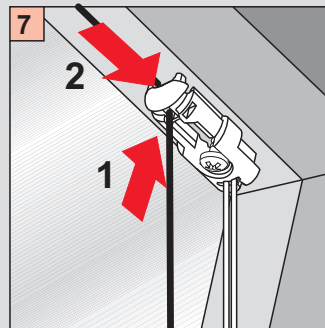
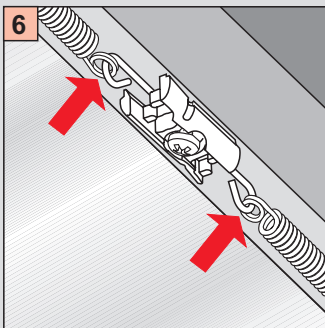
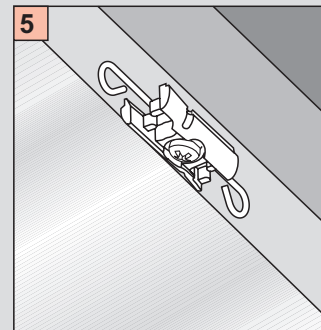
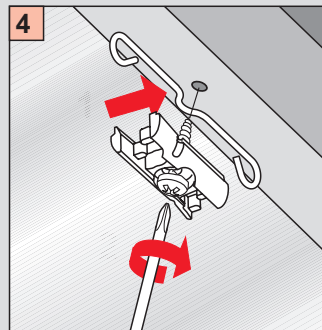
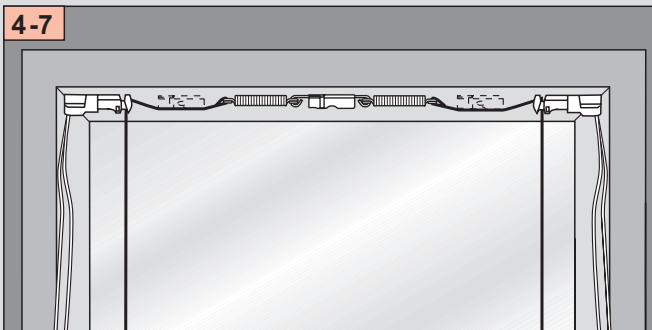
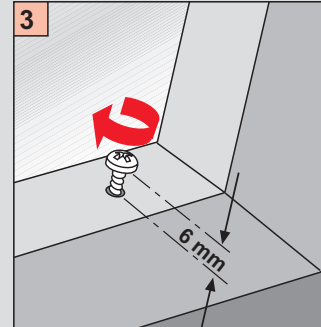
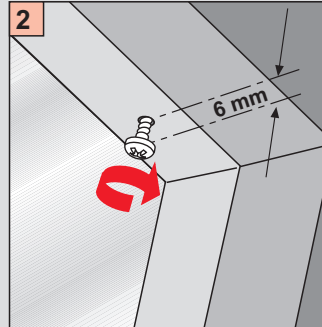
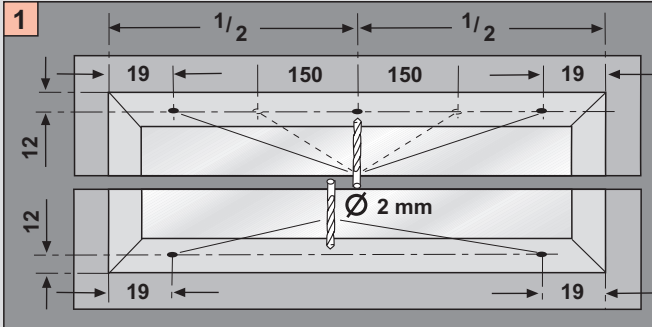
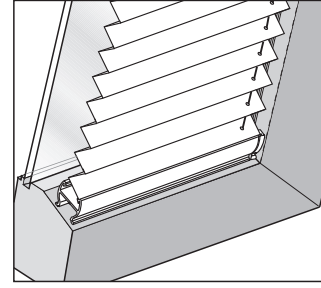
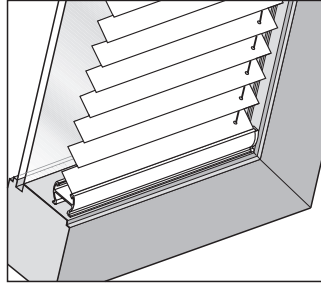
**The system must be installed flush with the front edge of the window.**

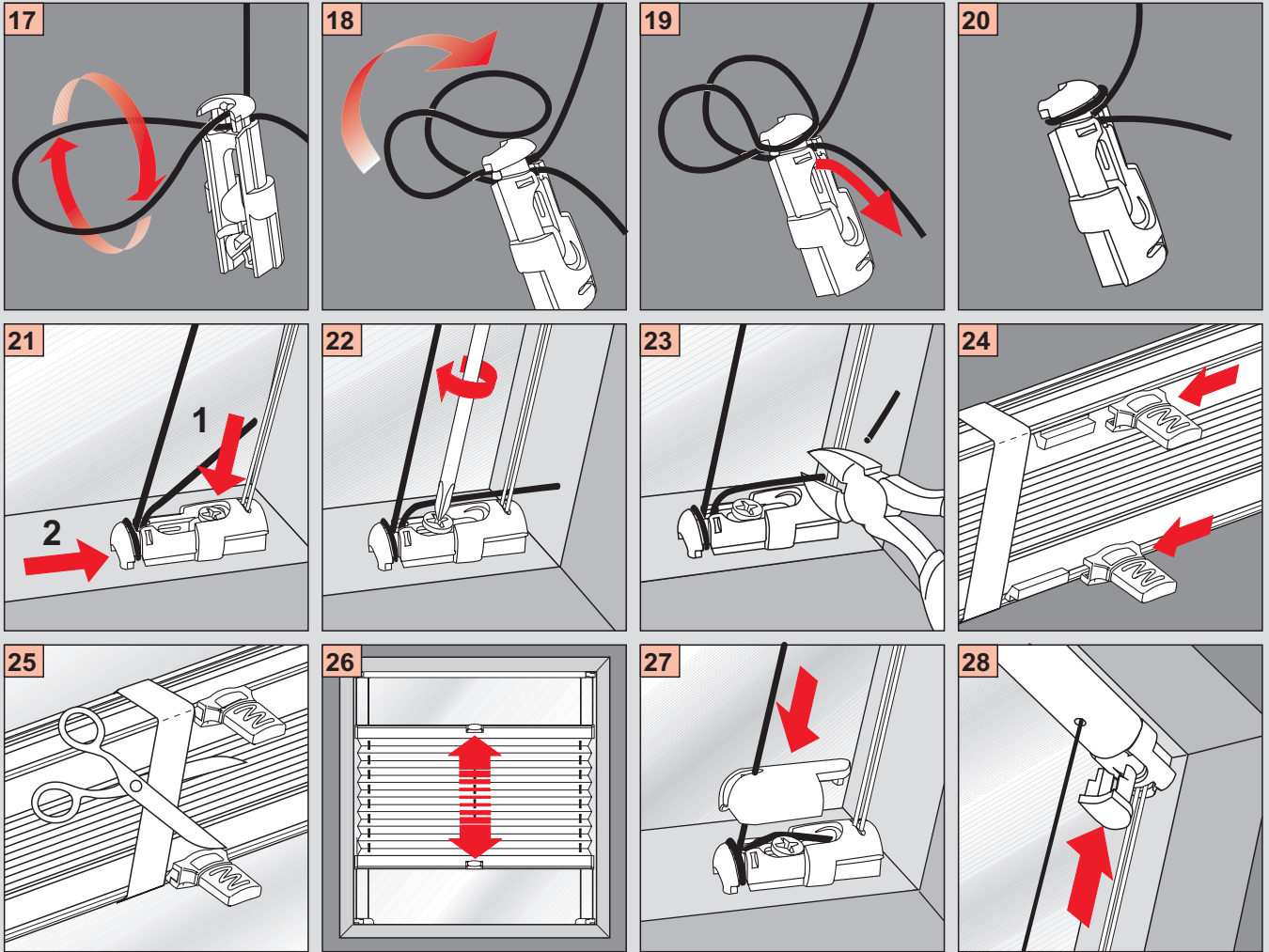
**Montage van de plissé precies aan de voorkant van de glaslijst.**

**Montage de l'installation a fleur avec l'arete avant de la fenetre.**

**Montaggio dell'impianto a paro con il bordo anteriore della finestra.**

**Montaż osprzętu równo z przednim kaniem od okna**





**Demontage • Disassembly • Demontage • Démontage • Smontaggio • Demontaž**

